



### **FACT SHEET 3**

### **JUDGES FOR 2017**

*'In photography there are no shadows that cannot be illuminated.'* – August Sander

FiPP is fortunate to have the following esteemed artists on its 2017 judging panels.

#### **FiPP OPEN SECTION (CAMERA AND ANY DIGITAL DEVICE)**

#### **LYN WHITFIELD-KING**



Capturing the very essence of a moment is Lyn Whitfield-King's ultimate passion. As Australia's first ever AIPP Grand Master in Photography and an AIPP Professional Wedding Photographer of the Year, Lyn is celebrated for her immense talent and inspiring approach to her craft.

Lyn has photographed hundreds of beautiful ceremonies and celebrations all around the world, from a stunning Indian wedding in New Delhi, an exclusive reception at the Raffles Hotel in Singapore, a Persian Navjote at Princeton University in Jersey, portraits in New York's Central Park, to the communion in London of the son of a former Mexican president.

Lynn's portrait subjects have been equally diverse, ranging from mothers and babies, high profile politicians, wine makers, Supreme Court judges, film producers and CEOs. Architectural subjects also feature in Lyn's portfolio, where she has photographed a variety of different environments including residential homes, apartments, commercial offices and recreation centres.

Based in Perth, Lyn travels regularly to weddings all around Australia and the world.

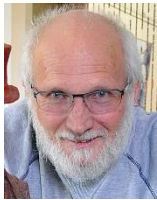
## **STEVE WISE**



Steve Wise is a Master Photographer with the Australian Institute of Professional Photography (AIPP) and an Accredited Medical Photographer (AIMBI) working out of Royal Perth Hospital.

He also runs a successful wedding photography and graphic design business – 27Creative.

## **GREG JAMES**



Greg James was born in Perth, Western Australia.

His involvement with art began at 18 when he enrolled at Claremont Technical College (later to become Claremont School of Art) where he studied Fine Art, majoring in Sculpture. He initially worked as a Sculpture Technician for Claremont School of Art before establishing a small foundry in his home studio in 1987. In 1992 he moved his studio to J Shed, where he developed the Greg James Sculpture Studio Gallery.

His numerous public sculptures have become well known landmarks throughout Fremantle and Perth, whilst his collectable work is displayed throughout Australia, and in galleries in Ireland, the United Kingdom, and New Zealand.

His work has also featured previously in Rome, Paris, London, Berlin, Amsterdam and Hong Kong. Greg specialises in bronze sculpture; however, he also works with materials such as stone, marble, wood, forton, aluminium and steel, and produces paintings and drawings using acrylics, charcoal, pencil, pastel, oil and watercolour.

## **FiPP SMARTPHONE SECTION (MOBILE PHONE ONLY)**

### **ABIGAIL HARMAN**



Abigail Harman has been a professional corporate photographer for more than 30 years working in the USA and the UK.

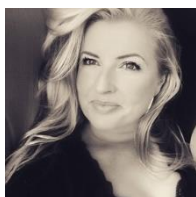
Her clients say she is very friendly and easy to work with and also a very capable photographer. She will make you feel at ease if you need a corporate portrait taken.

She will find eye catching imagery and solve your problem quickly and efficiently.

She is known for providing a great onsite studio setup facility for corporate and executive portraits.

Abigail regularly covers Government and Ministerial events involving high ranking officials.

### **ANGELIQUE LEE**



Angelique's a people photographer, addicted to prettiness, particularly the romance of French style.

She was born in Holland and feels most comfortable when surrounded by demonstrative affection...and cheese.

When she was ten, she won her first camera in a painting competition.

Angelique lives in Perth, Western Australia.

### **CLIVE ADDISON**

TBA

ENDS